

CONSERVATION EXCELLENCE 2010

CCLT Annual Conference

Driving and Parking Instructions

Note: Conference attendees will be sharing the lot with Museum patrons. We recommend arriving on the early side to avoid long parking lines. Due to the BodyWorlds Exhibit, the Museum has anticipated a higher volume of patrons.

Directions TO the Denver Museum of Nature & Science:

From Downtown Denver (State Capitol Building)

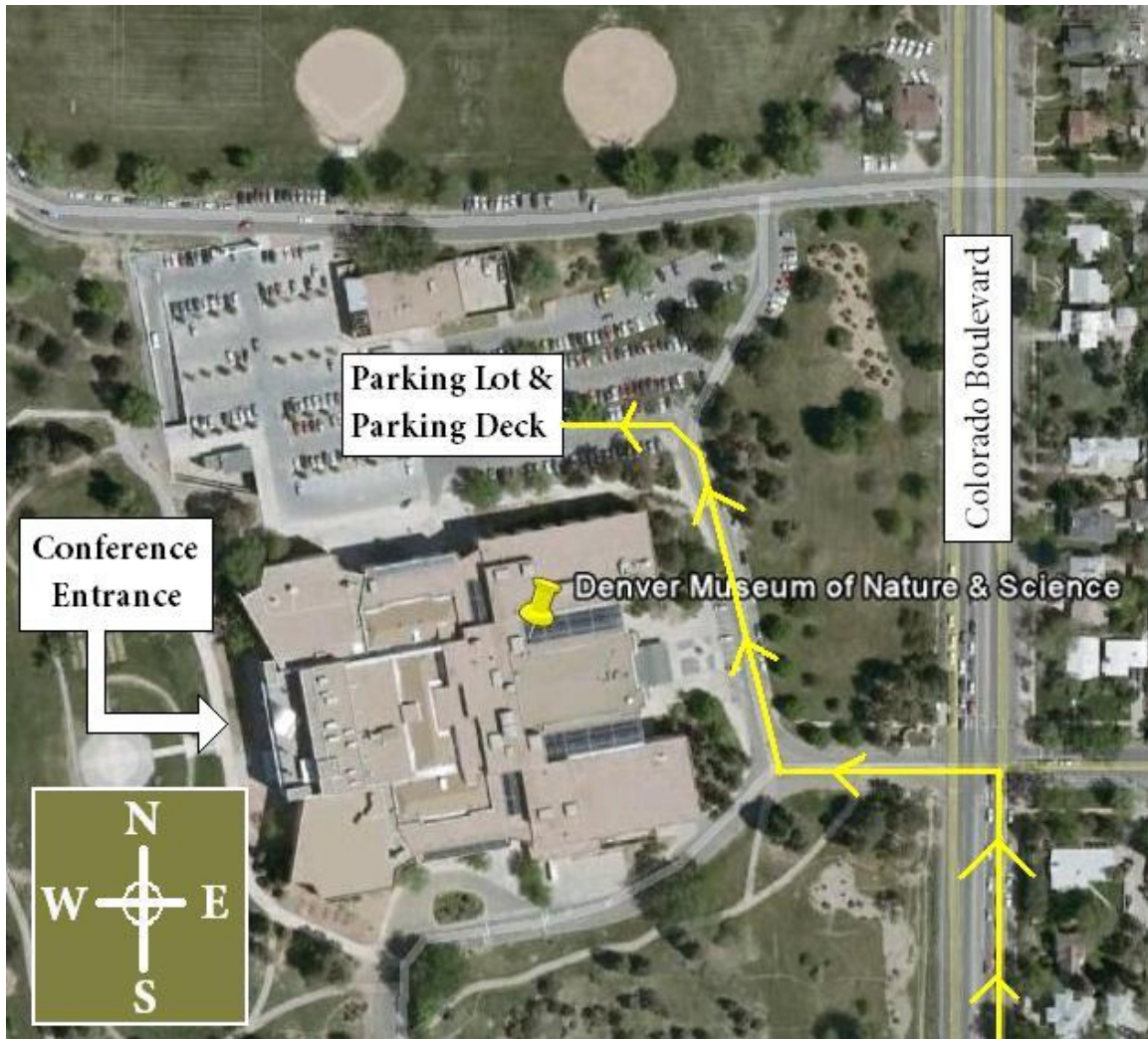
- Drive East on Colfax Avenue approximately 2.5 miles
- Turn North (Left) on Colorado Boulevard.
- Proceed North approximately 2 blocks, The Museum will be on your left.
- Turn left on Montview Boulevard and you will be on the Museum grounds.
- See Parking Map on next page.

Directions TO the Colorado History Museum : (Reception Location)

From Denver Museum of Nature & Science

- Drive West on Colfax Avenue approximately 2.5 miles
- Turn South (Left) onto Broadway (It is one block past the State Capitol)
- Proceed South approximately 2 blocks, The Museum will be on your left.
- There will be parking available on the street as well as in lots on Sherman, Lincoln and Broadway.

Access to Denver Museum of Nature & Science Parking



*Museum Parking is available in the Main Lot and the Parking Deck.
They are located on the North side of the Museum.*

Other Parking Options

In the event that the Parking Deck and Lots at DMNS are full, conference attendees can park in the lots for the Denver Zoo. They are located about 1 block into City Park on Montview Blvd. Also, the roadways within City Park itself can be used for overflow parking if needed.

Public Transportation Options

From Downtown (State Capitol) to the Denver Museum of Nature & Science

- From State Capitol, Walk to 17th Avenue and Grant Street.
- Board the **Number 20 Bus** (Direction: 20 Fitzsimons 20 via Hospitals)
- The Bus ride is estimated at about 15 minutes
- Arrive at Colorado Boulevard and Montview Boulevard
- Museum of Nature & Science is on the West side of Colorado Blvd.
- **Use the same route to get to the Colorado History Museum for the Opening Night Reception. Due to traffic, return trip could take up to 30 minutes. A bus arrives at 5:01 PM.**



Point A: State Capitol

Point B: Denver Museum of Nature & Science

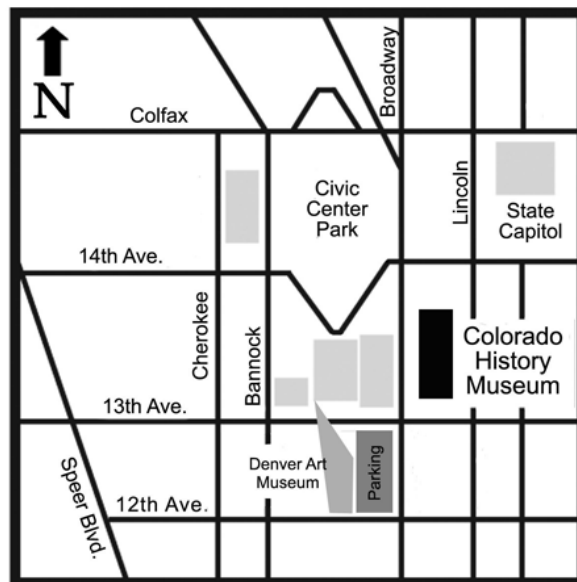


Diagram of the Colorado History Museum Location